



Customer

Designer

Organization

Address

Coordinates  
(39.219992, -76.614485)

Date  
9 September 2023

Zoomed out satellite view



3D model



3D model with LIDAR overlay 59 ft



Customer

Designer

Organization

Address

Coordinates

Date

-----

(39.219992, -76.614485)

9 September 2023

Street view and corresponding 3D model

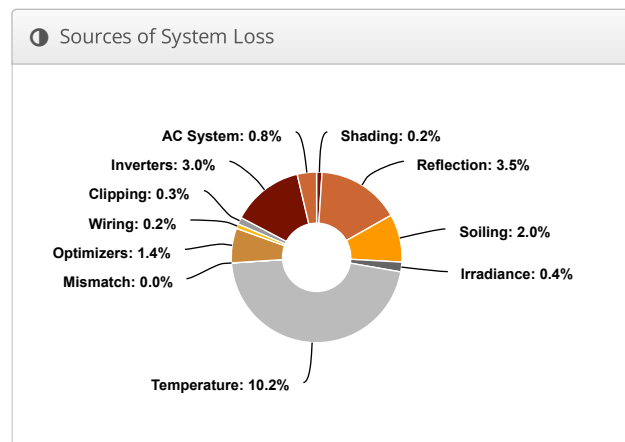
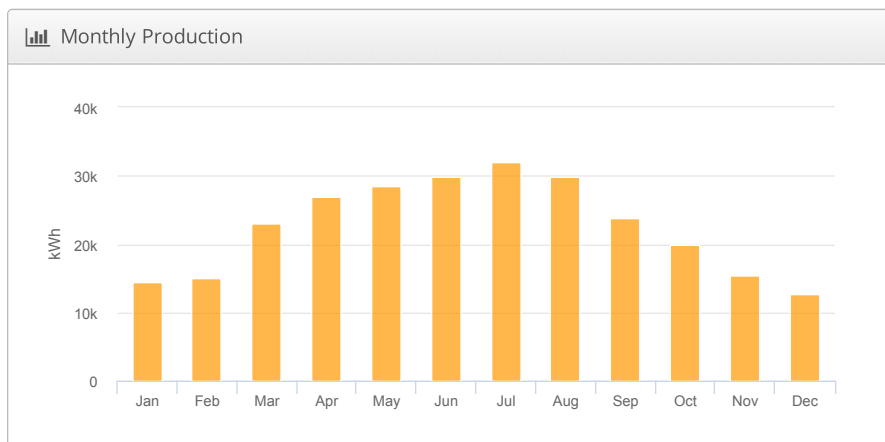
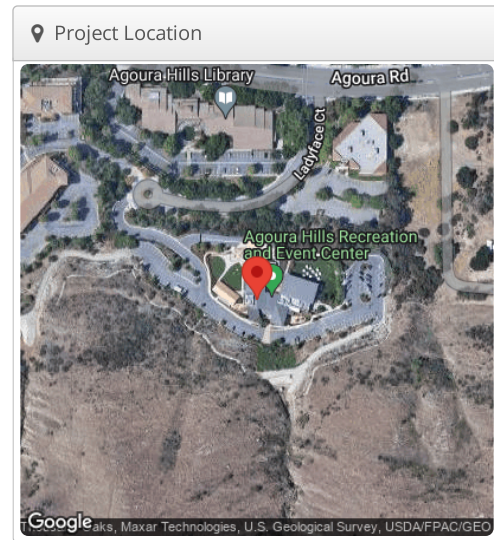


I, \_\_\_\_\_, certify that I have generated this shading report to the best of my abilities, and I believe its contents to be accurate.

### Design 1 Agoura Hills Rec Center, 29900 Ladyface Ct, Agoura Hills, CA 91301, USA

Report	
Project Name	
Project Address	
Prepared By	

System Metrics	
Design	Design 1
Module DC Nameplate	171.1 kW
Inverter AC Nameplate	150.0 kW Load Ratio: 1.14
Annual Production	271.5 MWh
Performance Ratio	79.7%
kWh/kWp	1,587.4
Weather Dataset	TMY, 10km grid (34.15,-118.75), NREL (prospector)
Simulator Version	3c68427f37-0b87f1565f-b602258f75-e6326d0489



⚡ Annual Production			
	Description	Output	% Delta
Irradiance (kWh/m <sup>2</sup> )	Annual Global Horizontal Irradiance	1,980.1	
	POA Irradiance	1,992.9	0.6%
	Shaded Irradiance	1,988.4	-0.2%
	Irradiance after Reflection	1,919.2	-3.5%
	Irradiance after Soiling	1,880.8	-2.0%
	<b>Total Collector Irradiance</b>	<b>1,880.7</b>	<b>0.0%</b>
Energy (kWh)	Nameplate	321,633.4	
	Output at Irradiance Levels	320,330.6	-0.4%
	Output at Cell Temperature Derate	287,729.1	-10.2%
	Output After Mismatch	287,727.2	0.0%
	Optimizer Output	283,555.4	-1.4%
	Optimal DC Output	283,007.4	-0.2%
	Constrained DC Output	282,194.6	-0.3%
	Inverter Output	273,728.7	-3.0%
	<b>Energy to Grid</b>	<b>271,519.4</b>	<b>-0.8%</b>
	Temperature Metrics		
	Avg. Operating Ambient Temp		18.0 °C
	Avg. Operating Cell Temp		39.3 °C
Simulation Metrics			
	Operating Hours		4635
	Solved Hours		4635

☁ Condition Set												
Description	Condition Set 1											
Weather Dataset	TMY, 10km grid (34.15,-118.75), NREL (prospector)											
Solar Angle Location	Meteo Lat/Lng											
Transposition Model	Perez Model											
Temperature Model	Sandia Model											
Temperature Model Parameters	Rack Type	a	b	Temperature Delta								
	Fixed Tilt	-3.56	-0.075	3°C								
	Flush Mount	-2.81	-0.0455	0°C								
	East-West	-3.56	-0.075	3°C								
	Carport	-3.56	-0.075	3°C								
Soiling (%)	J	F	M	A	M	J	J	A	S	O	N	D
	2	2	2	2	2	2	2	2	2	2	2	2
Irradiation Variance	5%											
Cell Temperature Spread	4° C											
Module Binning Range	-2.5% to 2.5%											
AC System Derate	0.50%											
Module Characterizations	Module						Uploaded By		Characterization			
	TSM-DE19M(II) 550 (Trina Solar)						HelioScope		Spec Sheet Characterization, PAN			
Component Characterizations	Device						Uploaded By		Characterization			
	SE50KUS (SolarEdge)						HelioScope		Spec Sheet			
	P750 (SolarEdge)						HelioScope		Mfg Spec Sheet			

📦 Components		
Component	Name	Count
Inverters	SE50KUS (SolarEdge)	3 (150.0 kW)
AC Home Runs	1/0 AWG (Aluminum)	3 (833.8 ft)
Strings	10 AWG (Copper)	21 (3,366.4 ft)
Optimizers	P750 (SolarEdge)	311 (233.3 kW)
Module	Trina Solar, TSM-DE19M(II) 550 (550W)	311 (171.1 kW)

🔌 Wiring Zones			
Description	Combiner Poles	String Size	Stringing Strategy
Wiring Zone	-	9-15	Along Racking

🏠 Field Segments									
Description	Racking	Orientation	Tilt	Azimuth	Intrarow Spacing	Frame Size	Frames	Modules	Power
Field Segment 1	Flush Mount	Portrait (Vertical)	10°	197.6°	0.0 ft	1x1	114	114	62.7 kW
Field Segment 2	Flush Mount	Portrait (Vertical)	16°	270.56448°	0.0 ft	1x1	38	38	20.9 kW
Field Segment 3	Flush Mount	Portrait (Vertical)	16°	89.05981°	0.0 ft	1x1	46	46	25.3 kW
Field Segment 4	Flush Mount	Portrait (Vertical)	9.5°	89.05981°	0.0 ft	1x1	21	21	11.6 kW
Field Segment 5	Flush Mount	Portrait (Vertical)	13.5°	19.214481°	0.0 ft	1x1	19	19	10.5 kW
Field Segment 6	Flush Mount	Portrait (Vertical)	19°	287.01782°	0.0 ft	1x1	19	19	10.5 kW
Field Segment 7	Flush Mount	Portrait (Vertical)	10°	38°	0.0 ft	1x1	18	18	9.90 kW
Field Segment 8	Flush Mount	Landscape (Horizontal)	16°	79.40506°	0.0 ft	1x1	18	18	9.90 kW
Field Segment 9	Flush Mount	Portrait (Vertical)	9.5°	218°	0.0 ft	1x1	18	18	9.90 kW

Detailed Layout



**Customer:**  
**Address:**

**System size:** 4.92 kW  
**Yr 1 Production:** 4,662 kWh

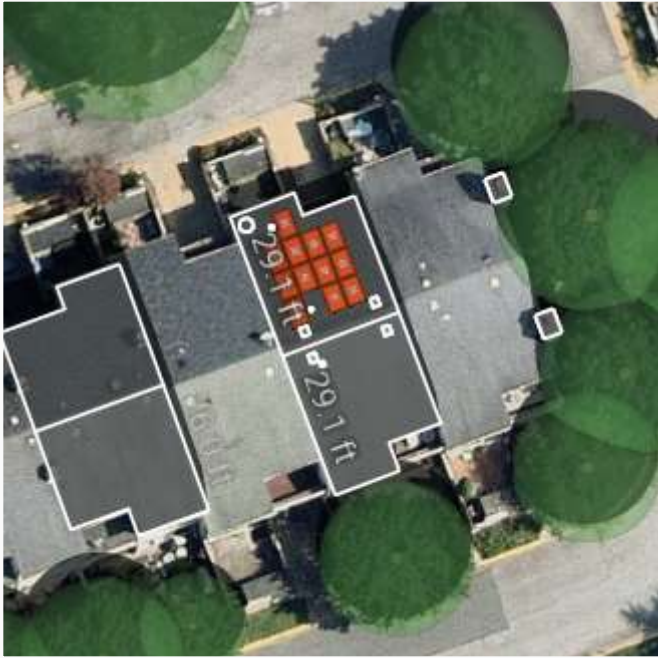
**Designer:**  
**Date:** September 16th, 2023

## Site Assessment



# Site Assessment

Customer:  
Address:



## Component List

Manufacturer	Model	Quantity
SEG SOLAR INC.	SEG-410-BMD-HV	12
SolarEdge Technologies Inc.	S440	12
SolarEdge Technologies Inc.	SE5000H-US (BEI4)	1



Notes:



Production

Utility Bill Savings

4.9 kW system  
12 panels

Simulate

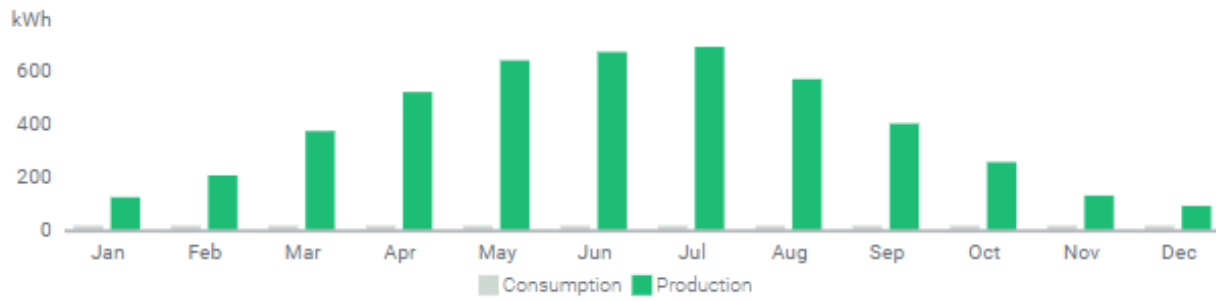


ANNUAL PRODUCTION

4,662 kWh  
Energy

4.7 MWh  
Energy Offset

MONTHLY PRODUCTION



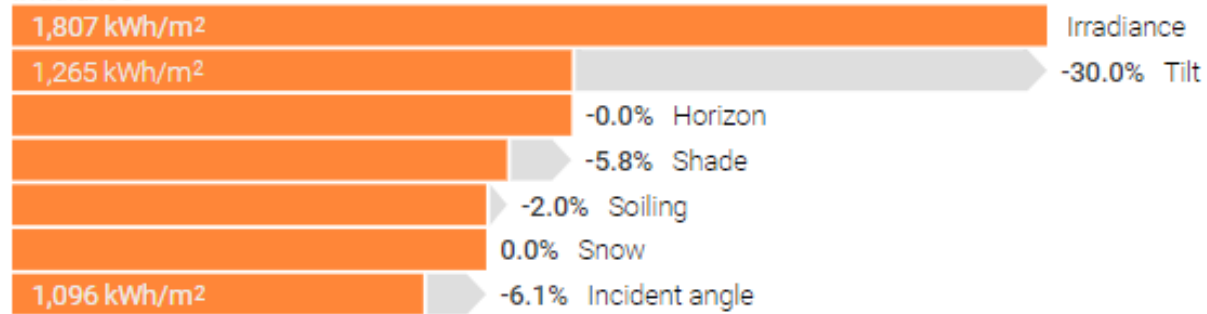
HIDE ADVANCED ^

Yield  
947 kWh/kWp

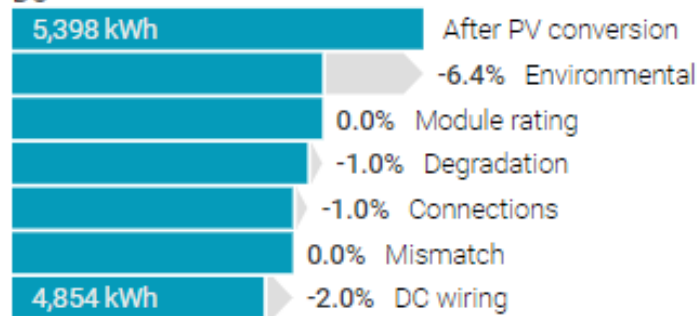
Performance Ratio  
0.864

### SYSTEM LOSSES

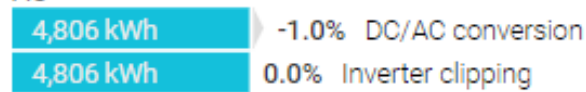
#### Irradiance



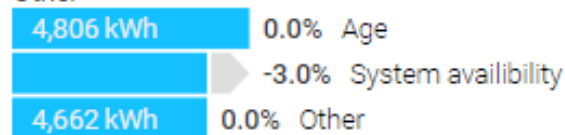
#### DC



#### AC



#### Other



Simulation Logs

